

InnoTech Atira double walled drawer system



- ▶ Internal organisation system for drawers and internal drawers
- ▶ Powder coated steel, anthracite



- ▶ Adapted to standard carcass width
- ▶ Plastic, anthracite

Set comprises:

- ▶ 1 plastic cutlery tray
- ▶ Dividing elements for partitioning drawer to suit needs (quantity differs depending on width, see illustration of partitioning)

OrgaTray 590

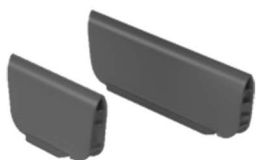
Carcass width mm	Order no. / nominal length mm		PU
	420	470	
300		9 194 908	1 set
400		9 194 909	1 set
450		9 194 910	1 set
500	9 194 906	9 194 911	1 set
550		9 194 912	1 set
600	9 194 907	9 194 913	1 set
800		9 194 914	1 set
900		9 194 915	1 set
1000		9 194 916	1 set

Partitioning

NL	D	Partitioning diagrams								
420	412	[Diagrams for NL 420, D 412]								
470	462	[Diagrams for NL 470, D 462]								
W		207	307	357	407	507	707	807	907	
CW		300	400	450	500	600	800	900	1000	

NL = Nominal length D = Depth W = Width CW = Carcase width

Dividing elements



- ▶ For OrgaTray 590
- ▶ Plastic, anthracite

Nominal length in mm	Order no.	PU
68	9 204 203	1/50 ea.
128	9 204 200	1/50 ea.